

Work Experience Launch

Fulford School
6th-9th May 2025





What do we do?

Everything we do is aimed at helping young people to acquire the skills and knowledge that will prepare them for the workplace, inspire them to plan for and achieve a successful future.

Work Experience plays a big part in this process.





Programme Aims

- Create meaningful engagement with employers
- Provide experiences of the workplace and industry insights
- Overview of local labour market information
- Develop individual knowledge and skill sets
- Provide the opportunity for self reflection and development of transferrable skills such as:

→ Teamwork

→ Creativity

→ Communication

→ Problem Solving

→ Resilience

→ Self Awareness



What is an Experience of the workplace?



Building skills and developing career pathways through temporary or long-term work experience or attending employability workshops and sessions that further develop your skills.

Preparing you for jobs that do not exist, to use technology not invented and solve problems we do not yet know!



What do employers say?



- Don't recruit young people as they worry about the level of investment they need to provide
- Young people struggle to 'market' themselves
- Confidence, presentation and preparation are key areas for improvement
- Soft skills, motivation, attitude and behaviour are very important in their selection criteria



Understanding the range of opportunities

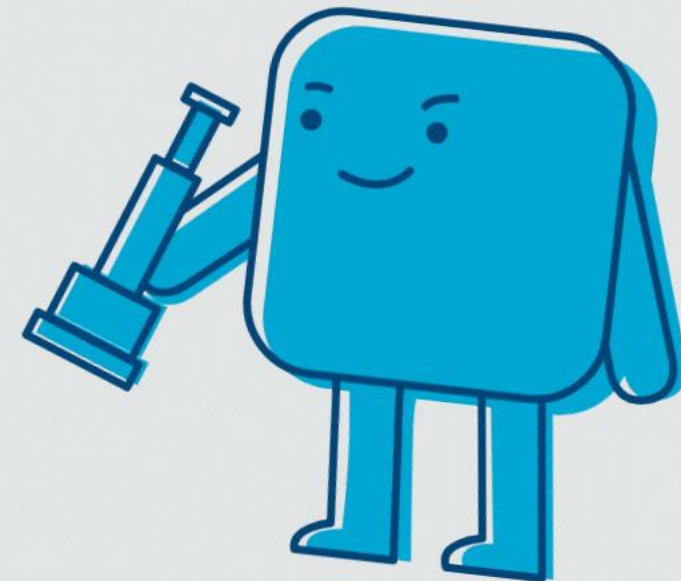


- Do you understand what employers have to offer and what they are looking for?
- Challenge any stereotypes or misconceptions about sectors, what a job involves etc.
- If you had to describe a job in IT what would you think of?

Would you think of this



Let's see what careers are out there...





The process – how does it work?



How do you find a placement?



- Whichever sector you're interested in, research your local companies!
- Check their social media sites and websites – they may have ways to apply to volunteer or apply for work experience
- Contact the company professionally, an email followed by a telephone call is usually best
- State why you would like to gain work experience/volunteer, what sort of role you feel would suit you and the availability you have
- Following this, you may have an interview! Prepare for this as if it were a job interview!

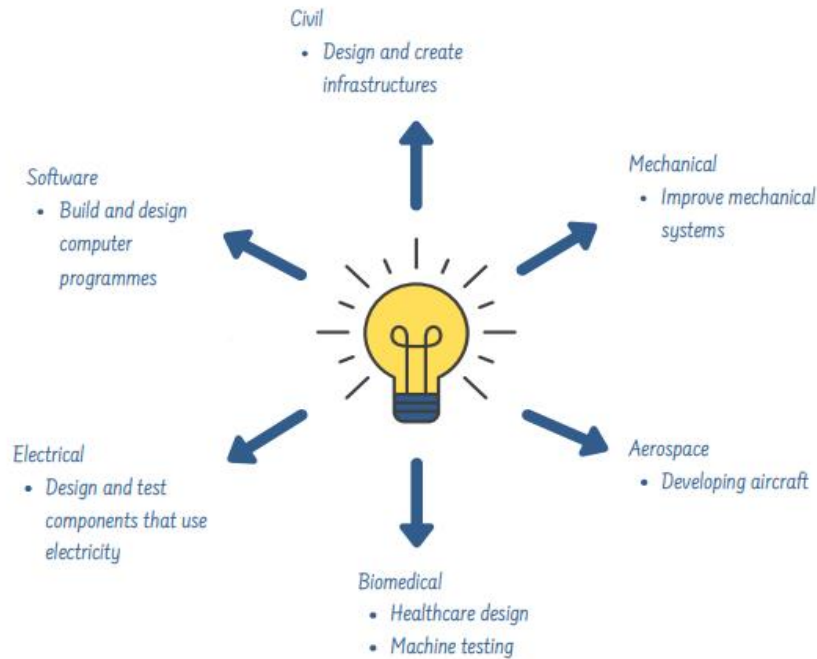


Sector guides



Work Experience Sector Guide

Engineering: applying the principles of science and maths to develop economical solutions to technical problems



Examples of possible placements

- Construction Sites
- Quantity Surveyor
- Aircraft Engineer
- Mechanic
- Builder's Assistant
- Electrician
- Manufacturing
- Design/CAD
- Architecture
- Planning
- Railways



Things to consider?

- Look on the school Careers Website for useful documents and resources - https://fulford.york.sch.uk/careers_/
- How will you get there? What will you be doing?
- Employers Liability Insurance
- Employers are giving up their time to invest in you!
- Placements abroad; placements working from home; and out of area placements are not permitted and will not be authorised. **Only placements in areas covered by NYBEP Health & Safety visits will be authorised.**



Where can I look for a placement?

Placements abroad/working from home/in an area not covered by NYBEP will not be permitted.



Map Key

BD- Bradford
DH- Durham
DL- Darlington
DN- Doncaster
HG- Harrogate
HD- Huddersfield
HU- Hull


HX- Halifax
LS- Leeds
S- Sheffield
SR- Sunderland
TS- Middlesbrough
WF- Wakefield
YO- Yorkshire



Next Steps

- Deadline for securing a placement – 1st week back after Half Term = **Monday 4th November 2024**
- Once you have a placement secured you will need to complete a consent form – further details will follow in form time.
- NYBEP also carries out the Health & Safety Visit & Young Person's Risk Assessment



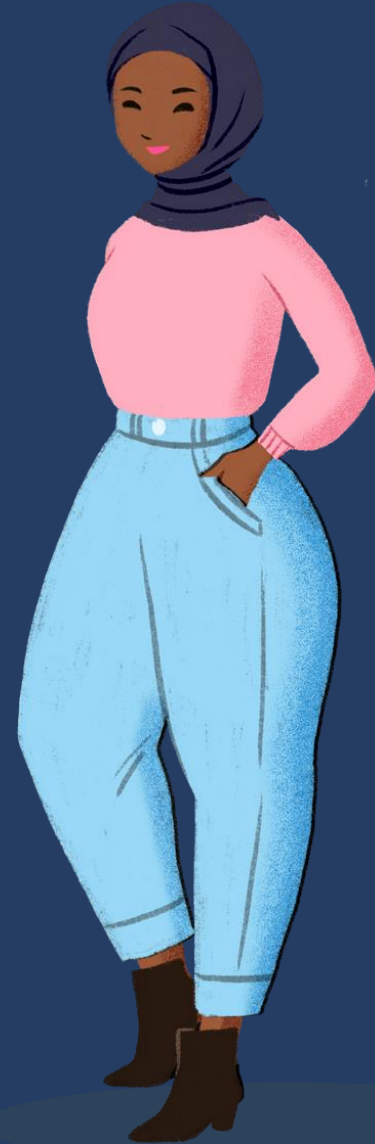
The image features a background of a beach with waves and palm trees. Overlaid on this are two hand-drawn palm trees in black ink. The trees have simple trunks and fronds. To the right of the trees, the text 'A COMFORT ZONE IS A BEAUTIFUL PLACE...' is written in a casual, hand-drawn font. A thick black horizontal line is drawn across the middle of the image, separating the text from the bottom text.

A COMFORT ZONE
IS A BEAUTIFUL
PLACE...

BUT NOTHING GROWS THERE.



Thank you for
listening!



successful futures 
NYBEP education and business in partnership