



Fulford School

Fulfordgate, Heslington Lane, Fulford, York. YO10 4FY
T: 01904 633300 E: office@fulford.york.sch.uk W: www.fulford.york.sch.uk

14 February 2022

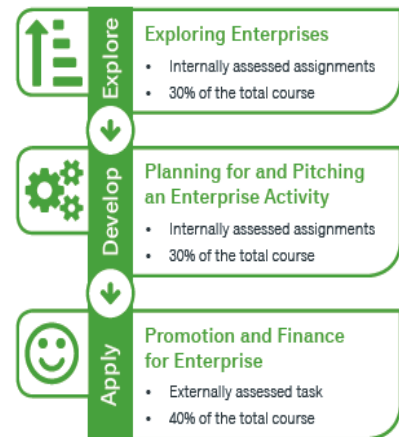
Dear students, parents and carers

I hope that this letter finds you and your family well.

As you are aware, your son/daughter is following the BTEC Tech Award in Enterprise, and I wanted to take this opportunity to keep you informed about the course and communicate key dates to you.

Overview:

- The course is made up of **three components**: two internally assessed components (coursework worth 60% of the grade in total) and one externally assessed (examination worth 40%)
- At present, students are studying component 3 (Promotion and Finance for Enterprise). This is an externally set examination of 2 hours and this will take place on the afternoon of **Friday May 13th**
- Once this exam is sat, lessons will move into a computer room and students will start their coursework. This will last for the remainder of the course. The two coursework units are Component 1 and Component 2, each worth 30% of the total grade awarded to students.



Key Dates:

- **Parents evening is on Tuesday March 1st**
- **Students will sit a full mock examination testing Component 3 content, in the hall on Tuesday March 29th. Your son/daughter will be given a revision list and a previous Component 3 examination to support their preparation.**
- **The externally set exam will be on Friday May 13th**

How Does the Grading Work?

Students achieve a grade for each component which are allocated points. At the end of the course the exam board (Pearson Edexcel) calculate the final grade by adding the points from each component and matching this against the qualification grade point threshold. As a rule of thumb, if you are comparing your BTEC grades against your other GCSE grades then;

- **Level 1 Pass = Half of a GCSE equivalent**
- **Level 2 Pass = GCSE Level 4 (old GCSE equivalent Grade C)**
- **Level 2 Merit = GCSE Level 6 (old GCSE equivalent Grade B)**
- **Level 2 Distinction = Level 7 (old GCSE equivalent Grade A)**
- **Level 2 Distinction *= Level 8/9 (old GCSE equivalent Grade A*)**

I hope this clarifies the course structure and important dates. If you have any further questions or concerns, please feel free to contact me via the school office email

Best wishes

Greg Maloy

Curriculum Leader Business and Economics